

# Montreal Airport - YUL





# Montreal Airport - YUL

**Land leased to Government of Canada until  
2072**

**600 movements per day  
2M passengers per year**



## IDENTIFY AND REPORT THEM

### MANAGEMENT PRIORITIES VERY HIGH



Gulls and Terns



Geese



Crows and Ravens



Hawks



Ducks and Associated Species



Snowy Owls

### MANAGEMENT PRIORITIES HIGH



Starlings



Falcons



Herons and Egrets



Medium Mammals



Pigeons and Doves



Vultures



Coyotes



Wild Turkeys



Kestrels



# Montreal Airport - YUL



**Des Sources Ecological Park - 2001**



# DES SOURCES ECOLOGICAL PARK – 62 acres (25 ha)

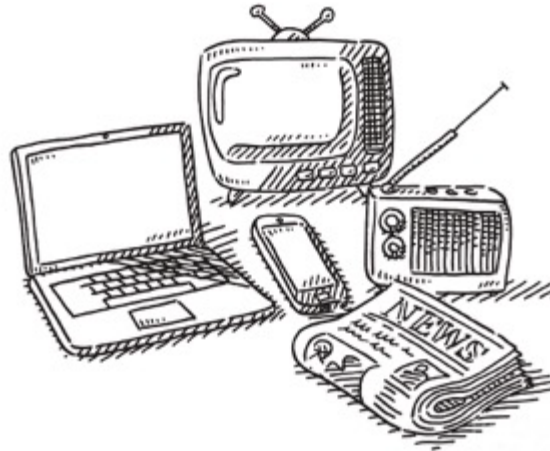
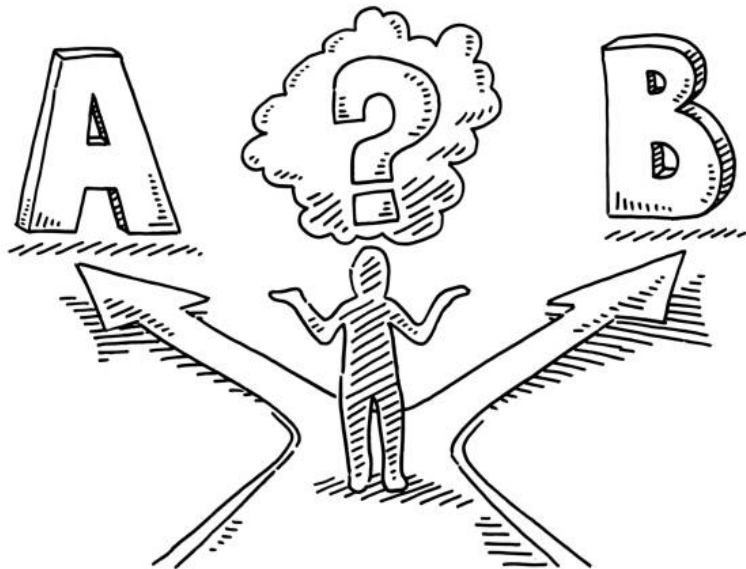




# Montreal Airport - YUL

**Citizen are asking to protect 541 Acres (219 ha)**

**Decision-Makers**



**Media**



**Activists**

**Public perception = Battleground**

**Social Acceptability = Outcome**



# Increase and Expansion of High-Risk Species

## VERY HIGH MANAGEMENT PRIORITIES



## HIGH MANAGEMENT PRIORITIES



Direct link with the presence of the Technoparc and the Des Sources Ecological Park



# LESSONS LEARN

- ✓ Sustaining Open Dialogue
- ✓ Building Credible Alliances
- ✓ Aligning with Public Values

**Public perception**

**The GOAL is Social Acceptability**

